

About the old Group State Summary Report

In previous versions of WhatsUp, the Group State Summary Report summarized the device states of all devices within a specified group.

The screenshot displays the 'Group Summary' report for 'My Network'. The 'Group Summary' table is as follows:

Group	Devices Up	Devices Down	Devices in Maintenance	Monitors Up	Monitors Down
Loop	1	1	0	2	2
A	0	1	0	1	1
P	0	0	0	0	0
Loop2	4	1	0	52	1
192.168.20	0	0	0	0	0
192.168.110	0	0	0	0	0
192.168.30	33	8	0	79	8

The 'Device Summary' table shows:

MW	All	Devices Up	Devices Down	Devices in Maintenance	Monitors Up	Monitors Down
		4	3	0	10	5

The 'Device Summary' table lists all devices in the group with their monitors and states:

Monitor	Device	State
Ping	127.0.0.1	Down at least 20 min
Ping	127.0.0.1	Down at least 20 min
Ping	127.0.12.12	Up at least 5 min
Ping(testarg) - testcom	192.168.3.1	Up at least 5 min
TTTTT' Connet	192.168.3.1	Up at least 5 min
Ping	192.168.3.138	Up at least 5 min
DNS	192.168.3.138	Down at least 20 min
Truip(agement) - conment	192.168.3.149	Up at least 5 min
DNS	192.168.3.149	Down at least 20 min
FTP	192.168.3.149	Down at least 20 min
Ping	192.168.3.156	Up at least 5 min
Ping	192.168.3.222	Up at least 5 min
Interface(1) - FastEthernet0 (192.168.3.222)	192.168.3.222	Up at least 5 min
Interface(2) - FastEthernet1 (192.168.200.1)	192.168.3.222	Up at least 5 min
Interface(3) - FastEthernet2	192.168.3.222	Unknown
Interface(4) - FastEthernet3	192.168.3.222	Unknown
Interface(5) - FastEthernet4	192.168.3.222	Unknown
Interface(6) - FastEthernet5	192.168.3.222	Unknown
Interface(7) - FastEthernet6	192.168.3.222	Unknown
Interface(8) - FastEthernet7	192.168.3.222	Unknown
Interface(9) - FastEthernet8	192.168.3.222	Unknown
Interface(10) - FastEthernet9	192.168.3.222	Unknown
Interface(11) - FastEthernet10	192.168.3.222	Up at least 5 min
Interface(12) - Vlan1	192.168.3.222	Unknown
Interface(13) - Async1	192.168.3.222	Unknown

- A Group Summary
- A Device Summary
- A table listing all devices in the group along with their monitors and state at the time of the last poll

Configuring your own State Summary Report

The Group and Device Summaries listed the number of:

- Devices Up
- Devices Down
- Devices in Maintenance
- Monitors Up
- Monitors Down

Each entry in the above sections for both Group and Device Summary could be clicked on to determine the information outlined in the table at the bottom of the report. For example, clicking on the number of Down Monitors listed in the Device Summary would display each Down monitor along with the device to which the monitor is assigned and how long the monitor had been in the Down state.

Viewing monitors that are down in this group.

Monitor	Device	State
DNS	192.168.3.138	Down at least 20 min
DNS	192.168.3.149	Down at least 20 min
FTP	192.168.3.149	Down at least 20 min
Ping(argument) - comment	192.168.3.149	Down
Ping	127.0.0.1	Down at least 20 min
Ping	127.0.0.1	Down at least 20 min

While the old Group State Summary report was useful, it was limited to displaying information within fixed categories. Now, in addition to the information displayed in the old report, WhatsUp Gold v 11 offers ways to expand upon this information using WhatsUp Gold workspace views and workspace reports.

About a State Summary workspace view

Workspace views in Ipswitch allow you to recreate the Group State Summary Report by configuring one or more with several workspace reports that contain much of the same information found in the old report. Most every workspace report also contains links that you can use to further drill-down to find more specific information about a device or other network component.

In previous versions of WhatsUp, the old Group State Summary Report included information on a group's up and down devices, up and down monitors, and devices in maintenance. Now, in WhatsUp Gold v11 's Problem Areas workspace reports, you will find five workspace reports useful in configuring your Group State Summary workspace view:

- Summary Counts
- All Completely Down Devices
- Devices with Down Active Monitors
- All Down Interfaces
- Device Group Mini Status

Summary Counts

Summary Counts (My Network)		Menu
Totals for: My Network		
Count	Total number of	
8	Monitored Devices	
5	Up Devices	
1	Down Devices	
2	Devices with Down Active Monitors	
0	Devices in Maintenance	
64	Enabled Active Monitors	
57	Up Active Monitors	
7	Down Active Monitors	
44	Up Interfaces	
5	Down Interfaces	
3	Unacknowledged Devices	
0	Actions fired in the last 4 hours	


This home workspace report gives a summary of a group by the total number of its:

- Monitored devices
- Up devices
- Down devices
- Devices with down Active Monitors
- Devices in Maintenance
- Active Monitors
- Down Active Monitors
- Up interfaces
- Down interfaces
- Actions fired in the last 4 hours

Each entry in the report contains the following information:

- **Count.** The total number specific types of passive monitors on the network.
- **Total number of.** The device status types.

All Completely Down Devices

All Completely Down Devices (My Network)		Menu
Device	Status	
 ATLDC	Ping(Down at least 5 min); SNMP(Down at least 5 min); Interfa...	

Configuring your own State Summary Report

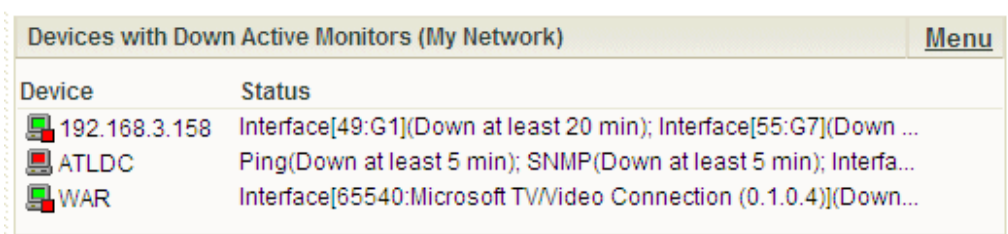
This home workspace report displays down devices for a specified group. Adding this workspace report to a workspace allows you to easily keep-up with the network status by showing the devices that are down.

Each entry in the report contains the following information:

- **Device.** The network device.
- **Status.** The device status after the last poll.

You can maximize your screen real estate by limiting the number of rows displayed in the report or shortening the width of the Status column.

Devices with Down Active Monitors



Device	Status
192.168.3.158	Interface[49:G1](Down at least 20 min); Interface[55:G7](Down ...
ATLDC	Ping(Down at least 5 min); SNMP(Down at least 5 min); Interfa...
WAR	Interface[65540:Microsoft TVVideo Connection (0.1.0.4)](Down...

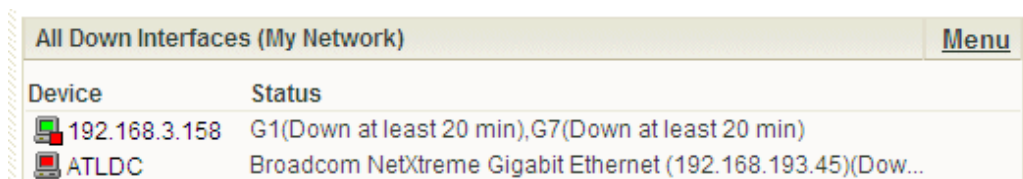
This home workspace report displays devices with down Active Monitors for a specified group. Adding this workspace report to a workspace allows you to easily keep-up with your network's status by showing you the status of your Active Monitors.

Each entry in the report contains these pieces of information:

- **Device.** The network device.
- **Status.** The status of the device's Active Monitor after the last poll.

You can maximize your screen real estate by limiting the number of rows displayed in the report or shortening the width of the Status column.

All Down Interfaces



Device	Status
192.168.3.158	G1(Down at least 20 min),G7(Down at least 20 min)
ATLDC	Broadcom NetXtreme Gigabit Ethernet (192.168.193.45)(Dow...

This home workspace report displays down interfaces for a specified group. Adding this workspace report to a workspace allows you to easily keep-up with your network's status by showing you what interfaces are down.

Each entry in the report contains the following information:

- **Device.** The network device.
- **Status.** The interface status after the last poll.

You can maximize your screen real-estate by limiting the number of rows displayed in the report or shortening the width of the Status column.

Device Group Mini Status

This home workspace report lists all devices in a device group and displays their status by color, allowing you to quickly see the status of devices in a group from across the room. Displaying multiple mini status reports within a workspace gives you a quick look at more than one group on your network and can help monitor important or problem areas more efficiently. You also have the option to display active monitors associated with the devices in a selected group, which is valuable in identifying the services on your network that are down.

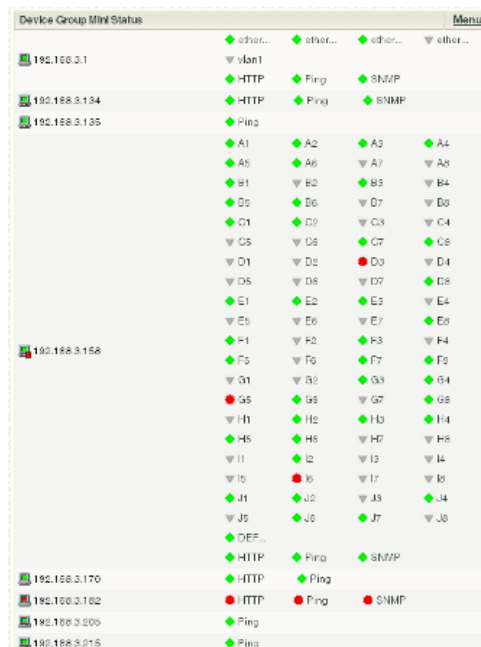
To help maximize your screen real estate, you can change the size of each mini status report. Even if the font size is too small to read at first glance, you can use the mouse-over text to find out the identity of a device. The static rows of the mini status also aid in device recognition, as devices always stay in the same row regardless of their current state.

Status icon colors are the same as the WhatsUp default state colors:

- **Green** is Up
- **Red** is Down
- **Gray** is Unknown

You have the option to display the Device Group Mini Status as either:

- **Normal.** Displays device and active monitor status with icons.



Configuring your own State Summary Report

- **High Contrast.** Displays device and active monitor status with bright colors.

Device Group Mini Status (My Network)					Menu
192.0.0.1	Ping				
ethemet	ethernet...	ethernet...	ethernet...	ethernet4	
192.168.3.1	Man1				
Ping	SNMP				
A1	A2	A3	A4		
A5	A6	A7	A8		
B1	B2	B3	B4		
B5	B6	B7	B8		
C1	C2	C3	C4		
C5	C6	C7	C8		
D1	D2	D3	D4		
D5	D6	D7	D8		
E1	E2	E3	E4		
E5	E6	E7	E8		
F1	F2	F3	F4		
F5	F6	F7	F8		
G1	G2	G3	G4		
G5	G6	G7	G8		
H1	H2	H3	H4		
H5	H6	H7	H8		
I1	I2	I3	I4		
I5	I6	I7	I8		
J1	J2	J3	J4		
J5	J6	J7	J8		
DEFAULT					
Ping	SNMP				
FastEthe...	FastEthe...	FastEthe...	FastEthe...		
FastEthe...	FastEthe...	FastEthe...	FastEthe...		
FastEthe...	FastEthe...	Null0	Man1		
Async1					
Ping	SNMP				
ATLDC (192.168.3.0)	Broada...	Broada...			
Ping	SNMP				
DEE DEE (192.168.3.201)	Intell(R) P...	Intell(R) P...			
Ping	SNMP				
THEGIRL (192.168.3.48)	Dell Wire...	Broada...			
Ping	SNMP				
WAR (192.168.3.43)	Broada...	Broada...			
Ping	SNMP				

The high contrast option looks similar to the old Group State Summary report, while the normal option is a more updated look that coincides with WhatsUp Gold v11.

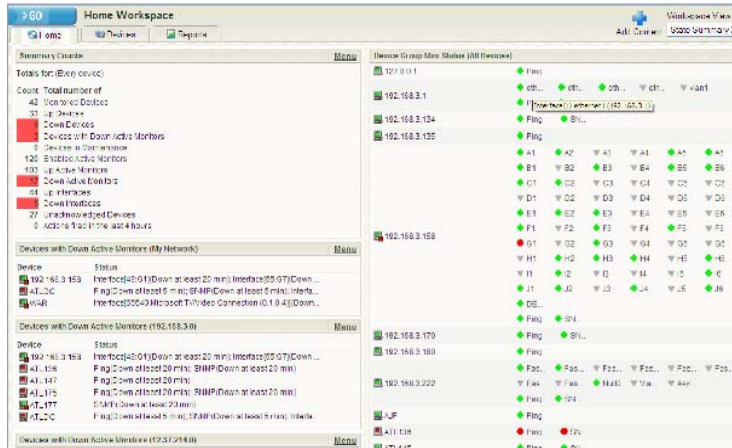
Though the five workspace reports listed above display much of the same information found in the old Group State Summary Report, you can add any workspace report you want to the State Summary workspace view -- this is one of the advantages to using the workspace views. The old report had fixed categories, while workspace views allow you to add any workspace report you want. This allows you to display information you feel is most important.

Workspace views can display up to a maximum of 15 workspace reports. If you want to add more information than can be displayed in 15 workspace reports, you can create multiple workspace views. This can also be useful to display summary information on two different device groups.

For example, you can create a Group State Summary workspace view that focuses on the dynamic group, "My Network." All of the workspace reports within this workspace view would focus on "My Network."

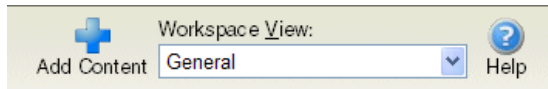
The screenshot shows the 'Home Workspace' interface. On the left, there is a 'Summary Counts (My Network)' section with a 'Menu' button. Below it, there are sections for 'All Completely Down Devices (My Network)', 'Devices with Down Active Monitors (My Network)', and 'All Down Interfaces (My Network)'. The main area on the right displays a 'Device Group Mini Status (My Network)' table, which is a high-contrast version of the table shown in the previous image. The table uses bright green for 'Up' status and red for 'Down' status. The interface also includes a 'Workspace View' dropdown menu at the top right and a 'Help' button.

You could then create another Group State Summary workspace view that focuses on a group or groups within the "My Network" dynamic group.

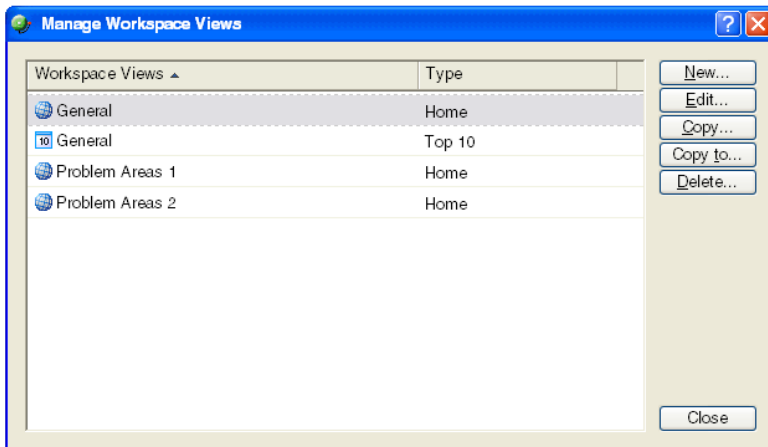


Configuring a State Summary workspace view

From the **Workspace View** list on the Workspace Toolbar, select **Manage Workspace Views**.



In the Manage Workspace Views dialog, you can create new workspace views, and edit, copy, or delete an existing workspace view.

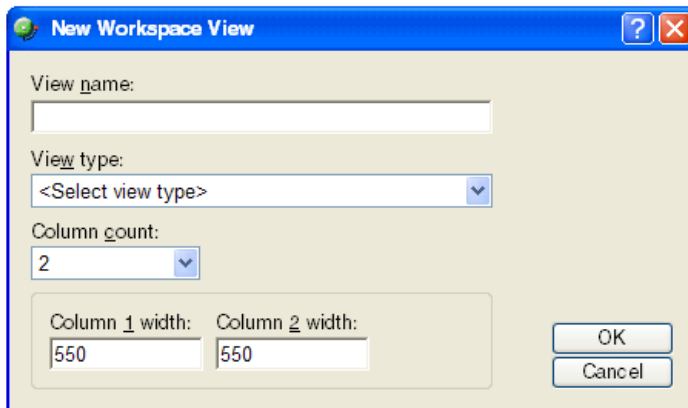


Configuring your own State Summary Report

- 1 Click **New** to configure a new workspace.
- 2 Select an existing workspace view and click **Edit** to change the current configuration of a workspace.
- or -
- 3 Double-click an existing workspace view to change its configuration.
- 4 Select a workspace view, then click **Copy** to make a copy of that workspace and add it to the list.
- 5 Select a workspace view, then click **Copy to** to copy an existing workspace to another user.
- 6 Select a workspace monitor view, then click **Delete** to remove it from the list.

To create a new workspace view:

- 7 From the Manage Workspace Views dialog, select **New**. The New Workspace View dialog opens.

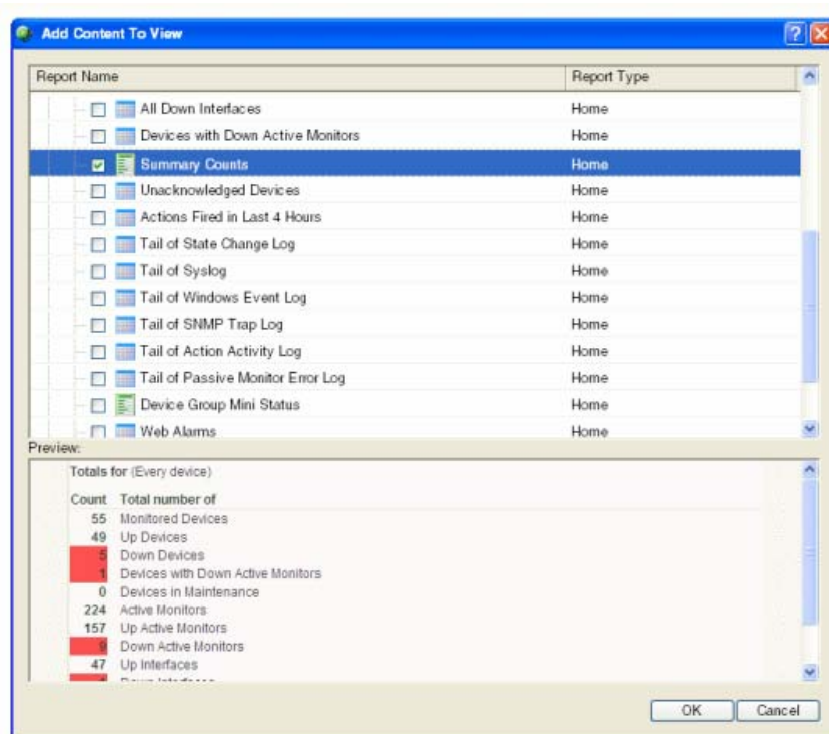


- 8 Enter the appropriate information in the following fields:
 - **View name.** Enter a name for the workspace view, such as State Summary, or State Summary 2.
 - **View type.** Choose a type for the workspace view from the list. After you choose and save this type, it cannot be edited.
 - **Column count.** Enter a value for the number of columns you want to have in the new workspace view. Keep in mind, the more columns you include, the smaller the data displayed inside a workspace.
 - **Column 1 width/Column 2 width.** Enter a value in pixels for each of the workspace columns.
- 3 Click **OK** to save changes.

After you have created the new State Summary workspace view, you will need to add workspace reports to the view.

To add a workspace report to a workspace view:

- 1 Click the **Add Content** button on the workspace toolbar. The Workspace Report Picker appears.



- 2 Scroll down and expand the Problem Areas category. As you select workspace reports, a preview for each report is displayed at the bottom of the dialog. You can select multiple workspace reports to add at one time.
- 3 Click **OK** to add the selected workspace reports to your State Summary workspace view.

About Ipswitch

Founded in 1991, Ipswitch, Inc., develops easy-to-use, affordable, software products that extend mission-critical IT resources for businesses and improve efficiency for consumers. Its product family includes WS_FTP Professional, the world's most popular FTP client; WS_FTP Server with 128-bit SSL encryption, the first industrial-strength, full-featured FTP server for Windows NT/2000/XP; WhatsUp Gold, a leading network mapping, monitoring, notification and reporting tool; IMail Anti-Virus, an add-on product powered by Symantec's CarrierScan™; and Ipswitch Instant Messaging, a secure Instant Messaging solution specifically designed for businesses.